

A la claire fontaine / Violín

Tulo : **A la claire fontaine.**

Autor : **Rima franc.**

Partitura gratis de : **Viol.**

Versi : **0.**

Adaptaci : **Viesly.**

Esta versi de la partitura para Viol de « A la claire fontaine », consta de 9 pinas y se ofrece de forma gratuita, cualquier reproducci fuera del sitio web estestricamente prohibida.

Toda reproducci, incluso parcial, estprohibida. El uso personal solamente.

Atenci

Esta partitura no esta oficial (arreglo realizado con la oreja) y esta gratuitamente descargable para su uso personal. La obra inicial esta quizas bien protegida pero contamos con la autorizacion tacita de los eventuales beneficiarios. Si un autor o una compania acreditada desea oponerse a su publicacion, tome [contacto conmigo](#) y sera inmediatamente retirada.



A la claire fontaine

<http://www.tapartoche.com>

By/Arrang. Viola

1



2



3



Toute reproduction de cette partition sur le net est interdite
Any copy of this music sheet on the web is not allowed

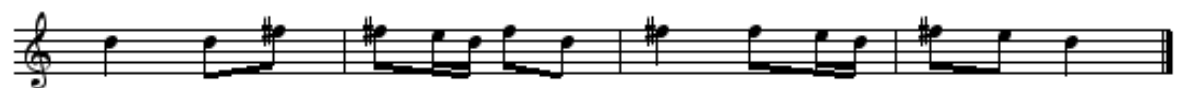
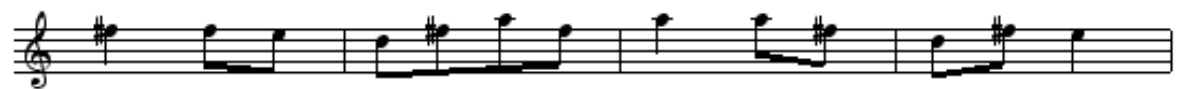
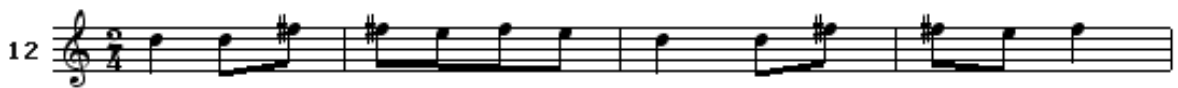
4

5

6

The image displays three musical exercises, numbered 4, 5, and 6, each presented on three staves of music. Exercise 4 is in 2/4 time and features a simple melody of eighth notes. Exercise 5 is also in 2/4 time and includes some chromaticism with sharps and naturals. Exercise 6 is in 2/4 time and features a more complex rhythmic pattern with eighth and sixteenth notes. Each exercise concludes with a double bar line.

Musical score for guitar, measures 7-9. The score is written in treble clef with a 2/4 time signature. Measure 7 begins with a '7' in the margin. Measure 8 begins with an '8' in the margin. Measure 9 begins with a '9' in the margin. The music consists of eighth and sixteenth notes, with some chords and accidentals (sharps and naturals) appearing in measures 9 and 10.





A la claire fontaine

1

Arrang. Viola

Version en Do Majeur

The first section of the score is for the C major version. It consists of three staves of music. The first staff begins with a treble clef, a key signature of one sharp (F#), and a 3/4 time signature. The melody is composed of eighth and quarter notes. The second and third staves continue the melody, with the third staff ending with a double bar line and repeat dots.

Version en Ré Majeur

The second section of the score is for the D major version. It also consists of three staves of music. The first staff begins with a treble clef, a key signature of two sharps (F# and C#), and a 3/4 time signature. The melody is composed of eighth and quarter notes. The second and third staves continue the melody, with the third staff ending with a double bar line and repeat dots.

<http://www.tapartoche.com>

Version en Fa Majeur

The Fa Major version is written in 2/4 time. The first staff contains four measures of music: F4, A4, C5, B4 | A4, G4, F4, E4 | D4, C4, B3, A3 | G3, F3, E3, D3. The second staff contains four measures: F4, A4, C5, B4 | A4, G4, F4, E4 | D4, C4, B3, A3 | G3, F3, E3, D3. The third staff contains four measures: F4, A4, C5, B4 | A4, G4, F4, E4 | D4, C4, B3, A3 | G3, F3, E3, D3. The piece concludes with a double bar line and repeat dots.

Version en Sol Majeur

The Sol Major version is written in 2/4 time. The first staff contains four measures of music: G4, B4, D5, C5 | B4, A4, G4, F4 | E4, D4, C4, B3 | A3, G3, F3, E3. The second staff contains four measures: G4, B4, D5, C5 | B4, A4, G4, F4 | E4, D4, C4, B3 | A3, G3, F3, E3. The third staff contains four measures: G4, B4, D5, C5 | B4, A4, G4, F4 | E4, D4, C4, B3 | A3, G3, F3, E3. The piece concludes with a double bar line and repeat dots.

<http://www.tapartoche.com>

Version en Do Majeur

The 'Version en Do Majeur' section consists of three staves of musical notation. Each staff begins with a treble clef, a 2/4 time signature, and a key signature of one sharp (F#), which is C major. The first staff contains four measures of music. The second staff contains four measures of music. The third staff contains four measures of music, ending with a double bar line and repeat dots.

Version en Ré Majeur

The 'Version en Ré Majeur' section consists of three staves of musical notation. Each staff begins with a treble clef, a 2/4 time signature, and a key signature of two sharps (F# and C#), which is D major. The first staff contains four measures of music. The second staff contains four measures of music. The third staff contains four measures of music, ending with a double bar line and repeat dots.

<http://www.tapartoche.com>